

FBMH Canvas Central Newsletter

Issue 6
October 2025



elearning.bmh.manchester.ac.uk/canvas

FBMH eLearning Community (Viva Engage)

In this issue

- How to get support from the eLearning team: Megan Broadbent
- Start of the year wins! Lisa Dolan
- Sections & Diff Tags: Adrian Emerson
- Training Opportunities: Megan Broadbent
- In case you missed it!
- Student Partner update: Manas Kapur

BMH 25-2026 in Canvas

The journey to transition our faculty to Canvas has been a significant one, and I'm pleased to share that we have successfully begun the 25-26 year on Canvas. I would like to take this opportunity to sincerely thank everyone who contributed to this process.

This achievement has been made possible through the collaborative efforts of our students, professional services staff, academic colleagues, external partners and our eLearning team. Together, we have brought to life our new Virtual Learning Environment—Canvas by Instructure.

I look forward to seeing how we, as a faculty, continue to explore and enhance this platform throughout the academic year. I'm especially excited to witness all our users grow in confidence and embrace the innovative opportunities that Canvas offers.

Thank you once again for your dedication and support.

Please get in touch if you need any support: **Contact FBMH eLearning**

How to get support

There are now more streamlined ways to receive support from the Faculty of Biology, Medicine and Health eLearning team. To ensure your query reaches the correct person and is resolved efficiently, we encourage you to use our official support channels.

We have introduced a new Canvas ServiceNow request form. This form helps route your query directly to the appropriate team member, allowing us to respond more quickly and accurately.

Please use these channels instead of sending messages to the shared email inbox. Emails sent to the shared inbox may be missed or be manually converted into Service Now tickets, which can result in delays.

Canvas Technical Requests

Submit queries related to Canvas, digital learning applications, or learning design: [Canvas Technical Request Form](#)

Canvas Learning Design Support

Request assistance with course structure, pedagogy, or design: [Canvas Learning Design Form](#)

Live Chat with Support

Receive instant help from a member of the support team every day between 10-12 and 2-4: [Start a Chat](#)

Something else

Something isn't working or you are experiencing an issue that doesn't fit into the categories above: [Something else form](#)

Book a One-to-One Support Session

Meet with a member of the FBMH eLearning team for tailored support: [Book a Session](#)

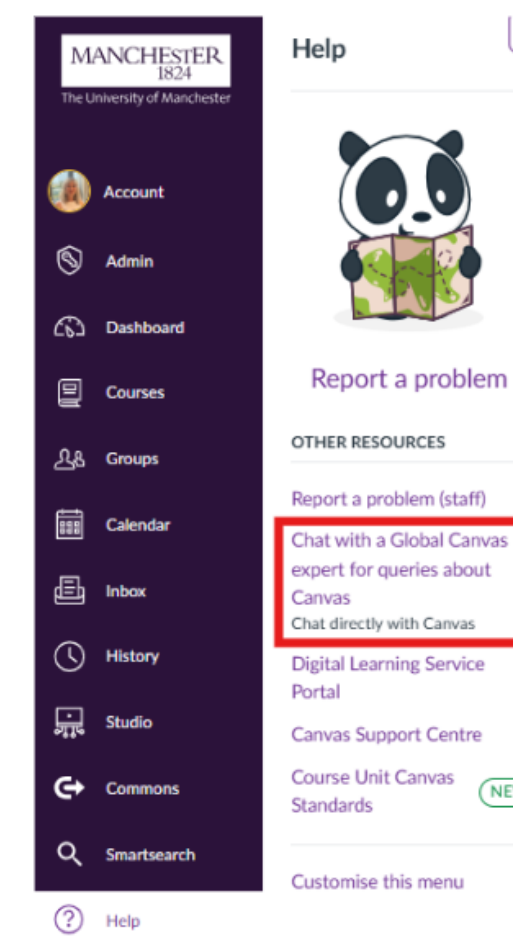
Canvas Training and Resources

Explore training opportunities and resources: [Canvas training page](#)

Canvas 24 Hour Help

When logged into canvas.manchester.ac.uk, select 'Help' from the left-hand menu and choose Chat with a Global Canvas Expert.

This service is available at any time and is ideal for quick technical questions. It connects you with a Canvas specialist who can assist immediately.



Megan Broadbent:
eLearning support officer

Start of the Year Wins!

Canvas Induction launched

Every new student in FBMH now has a custom Canvas induction, with versions for each of the three Schools and a dedicated guide for returning students adjusting to the move from Blackboard to Canvas. These inductions give students a single, reliable place to find everything they need to know about Canvas. Already, over 1,000 students have accessed the induction materials.

Student eLearning Inductions

We delivered a face-to-face Welcome Week eLearning and computing induction for all 700 first-year SBS students and an online induction for all SBS PGT students, ensuring students start their studies confidently with the tools and platforms that they will be using, and knowing where to seek out support.

Team-Based Learning: Active Learning at Scale

Team-Based Learning is now live in LAMS for over 3,000 students, running across more than 20 different course units. This marks one of the largest coordinated uses of active learning technology in the Faculty, and means that our students are benefitting from structured collaboration and real-time feedback at scale!

Canvas Courses Published

At the time of writing, 87% of all Semester 1 and full-year courses are already published in Canvas. eLearning are supporting Unit Coordinators of the remaining courses to ensure that students have access to their learning content ASAP.



Lisa Donlan:
Learning Technologist

Start of the Year Wins!

Fantastic First Contact Support

Our First Contact team have already dealt with over 250 requests for help and support this month. Most queries have been related to Canvas but also covering the many areas we support, including Mentimeter, Cadmus, and WordPress.

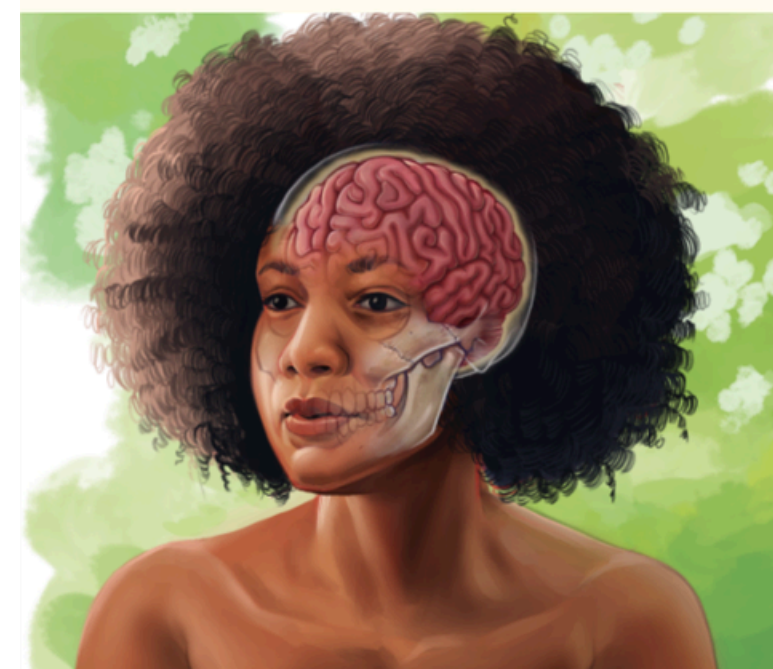
FBMH Academics leading the way

A huge thank you to our academic colleagues who have embraced the University-wide Canvas template and followed accessibility guidelines. The consistent design both helps students find what they need quickly but also ensures that everyone can access learning materials in an inclusive way.

‘Reframing Stopford’ Art Exhibition

A team of our eLearning colleagues and Dr Elora Baishnab have very proudly put together an art collection to be displayed in the Stopford Building, titled ‘Reframing Stopford: Inclusivity in Medical Art’. The pieces work to meaningfully diversify physical learning spaces by showcasing medical art of people with underrepresented characteristics, with the goal of improving students’ sense of belonging. The launch event for this project is on Thursday 23rd October in the Stopford Common Room 2-4pm, all are welcome!

Reframing Stopford: Inclusivity through medical art



Gallery launch
(All welcome!)

Stopford
Common
Room
2pm-4pm

23/10
/2025

Featured Artists

Ni-ka Ford

Tiffany Fung

Hillary Wilson

Lois Jane

Sarah Gluschitz

Sana Khan

Lilith Lawrence



Lisa Donlan:
Learning Technologist

Sections and Differentiation Tags

In Canvas, PS Staff (with Admin+ privileges) can use tools to manage students and administrative functions to support the organisation and delivery of teaching, learning and assessment. The main tool to manage this in Canvas is Sections. Sections in Canvas are subsets of students typically used to reflect divisions like assignments, lab groups, tutorial times, or cross-listed classes. Sections allow for tailored scheduling, submission and communication of assessments including assignments and quizzes. Sections will be used to create administrative groups to all Canvas resources using the 'Assign to' tool, in particular, for assessment, but also for Modules, Pages, Discussions and Announcements.

Differentiation Tags is a Canvas feature that allows instructors to create custom sets of students within a course. These sets are hidden from students and can be used for various organisational and instructional purposes. For the most part, Diff Tags have the same functionality as Sections in that they facilitate the availability and access of Canvas resources based on specific dates and times. **Diff Tags will only be used to group DASS students to maintain anonymity across all elements of Canvas.** Assessments (along with other Canvas resources) will target DASS students based on the use of Diff Tags in the Assign to feature.

For further detailed information on the creation and management of Sections and Diff Tags (including the large scale creation of Sections), please read the guide below, and contact the FBMH eLearning team for help and support.

[Sections and Diff Tags – A Guide for Management](#)



Adrian Emerson:
Assistant eLearning Manager



Training opportunities after the start of year.

The FBMH eLearning team has successfully trained over 1,200 colleagues in using Canvas. As we approach the start of the academic year, our focus is shifting from in-person training to ensuring that courses are fully prepared for students, providing timely support, and assisting with any urgent queries that may arise.

This change does not mean that training is no longer available. You can still access support whenever you need it. One-to-one appointments with the team remain bookable and we are here to help.

Book an appointment

To arrange a session, please visit the eLearning team's website and complete the 'Book an Appointment' form, or use the following link:

[Book an appointment](#)

By submitting this form, you will be matched with a specialist who can assist with your specific query. Whether you need help with Canvas functionality, learning design, help setting up an assessment, or troubleshooting external integrations, we are here to support you.

Asynchronous versions of training

We offer a range of self-paced online training modules that you can access at any time. These cover essential Canvas topics including:

- Canvas basics
- Unit construction
- Assignments
- Quizzes and tests
- Unit deployment

[Training Options](#)



Megan Broadbent:
eLearning support officer



Training opportunities after the start of year.

Digital Discovery Series:

If you are looking for concise, targeted guidance on Canvas features at the moment you need it, the Digital Discovery Series is designed for you. These sessions run every Friday from 2:00pm to 3:00 pm and each one explores a different Canvas tool or feature. Topics are scheduled to align with the academic calendar, so you receive relevant support just in time. Full list of topics covered:

- Rubrics
- Item banks
- Canvas analytics
- Admin training on deployment
- Sections and differentiation (diff) tags
- Group work
- SCORM
- Adaptive release tools
- Marking

You can find recordings of all sessions on the Digital Discovery Homepage

[Digital Discovery Series](#)

If you would you like to see a particular topic covered in the Digital Discovery Series, you can submit your suggestion using this form:

[Request a DDS topic](#)



Megan Broadbent:
eLearning support officer



In case you missed it!

ARE YOUR RESOURCES CANVAS READY?

We're asking all academics in the FBMH Faculty to check their **iSpring**, **Rise** and **SoftChalk** packages within Canvas to make sure they'll be working when teaching begins

If you run into any issues with your resources, contact the FBMH E-Learning team as soon as possible so we can help



Contact us

<https://elearning.bmh.manchester.ac.uk>



HOW DEADLINES WILL WORK IN CANVAS

- ◆ All Deadlines will be at 14:00
- ◆ There is a one minute grace period - work submitted before 14:01 will be accepted
- ◆ Seconds are not displayed in Canvas but they are used. 14:01:01 is late





Student Partner Update

On September 9th, we had the opportunity to take part in the Canvas Confidence Festival, an event designed to showcase the benefits of Canvas and share experiences from staff and students who've been getting to know the platform.

We presented alongside staff to talk about Studio, Canvas's built-in media tool. Having used it ourselves in preparing, we quickly realised just how much smoother it is compared to Blackboard. Uploading, recording, and embedding video content is far more intuitive, and the interface feels genuinely student-friendly. It's one of those tools that makes you wonder how much easier our first two years of university could have been if we'd had access to it from the start.

One feature that stood out to us is the peer review function. The process of giving and receiving feedback becomes seamless, rather than juggling email chains or clunky submission portals, everything happens directly within Canvas. This streamlines group work, encourages collaboration, and takes away some of the usual stress of managing deadlines and file formats. It also supports one of the things we value most about studying here: learning from each other as much as from the formal teaching.

What really came through at the festival is how Canvas opens doors for more interactive and accessible teaching. Staff shared examples of using Studio for lectures, interactive assessments, and creative projects, and it was clear that students benefit from the extra clarity and organisation.

For us, the event was both a chance to share our perspective and to reflect. Having already seen how much of a difference Canvas makes, we're genuinely excited for the next cohorts who will get to experience their full degree journey with it.

Canvas Microsite

Canvas Central

Canvas Training

 **FBMH eLearning Community (Viva Engage)**

 **elearning.bmh.manchester.ac.uk/canvas**

 **[FBMH eLearning \(LinkedIn\)](#)**

 **[FBMH eLearning \(YouTube\)](#)**